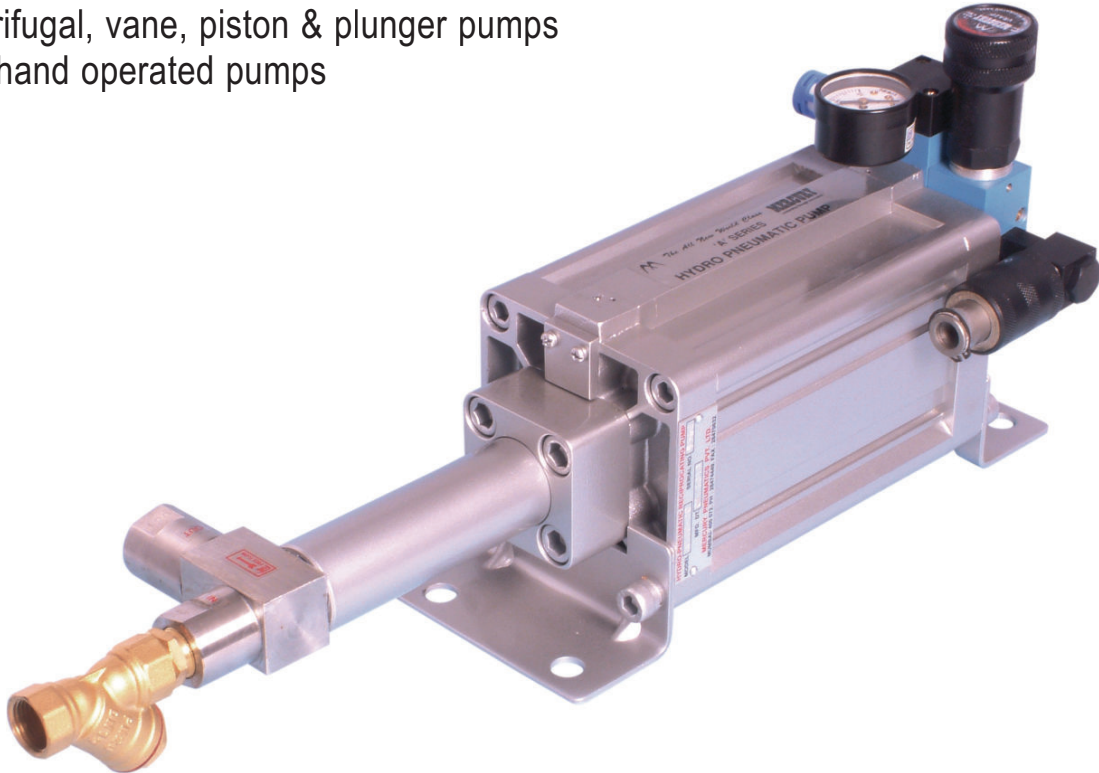




Hydro Pneumatic Pumps

The All New World Class 'A' Series

The efficient, economical alternative to centrifugal, vane, piston & plunger pumps and hand operated pumps



Typical Applications :

- Hydro static Pressure Testing
- Cyclic Pressure Testing
- Burst Strength Testing
- Operation of Hydraulic Jacks, Clamps & Presses
- Portable Systems for Construction, Mining & Defence Equipments
- Overload Protection of Mechanical Presses, Shears etc.

Mercury Pneumatics Pvt. Ltd.

C-105, Ansa Industrial Estate, Saki Vihar Road, Andheri (E),
Mumbai - 400072. India. Ph.: +91-22-40344200

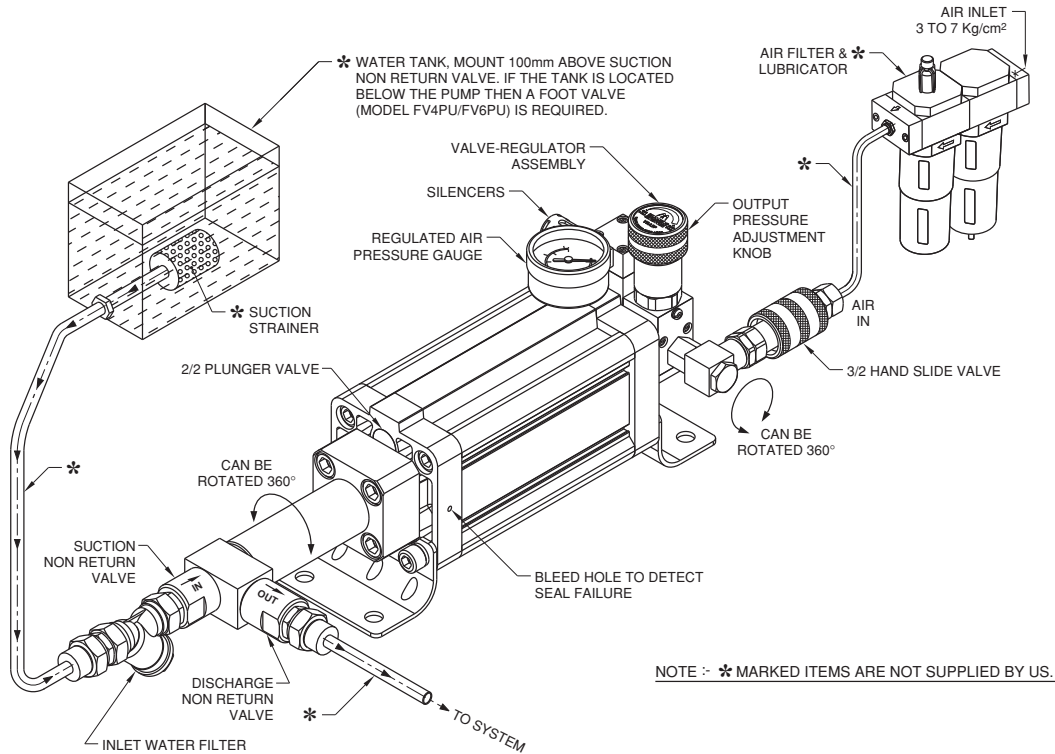
E-mail: mercurypneumatics@vsnl.net Website: www.mercuryindia.net

MERCURY Hydro Pneumatic Pumps are products of extensive development efforts. These rugged pumps are efficient, low cost alternatives to motorised and hand operated pumps.

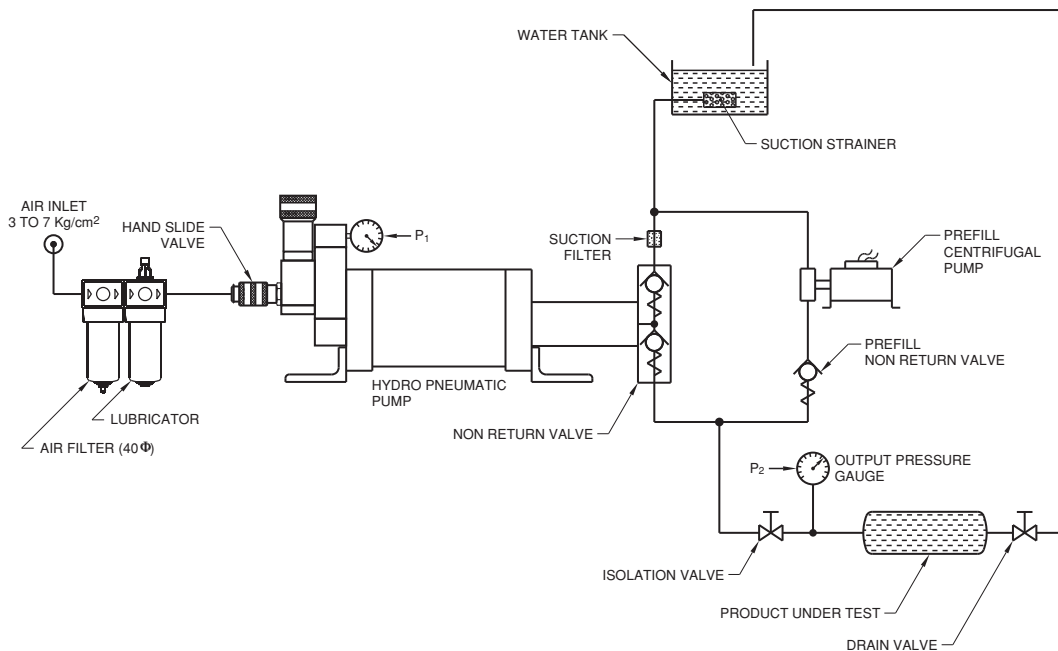
Salient Features :

- Compact and lightweight. Can be mounted in any orientation.
- Low air consumption when used in conjunction with a high volume, low pressure prefill pump.
- Automatically compensates for leakages to maintain constant pressure.
- Ideally suited for operation in explosive environments.
- Large variety of models to cover varied applications.
- Simple construction for easy servicing.

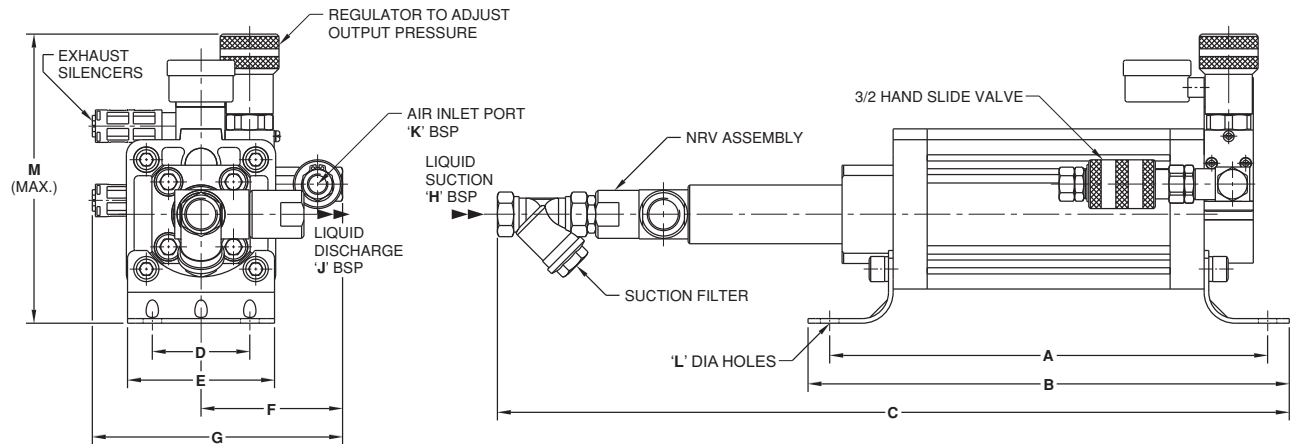
General Layout of Pump Installation



Typical Pressure Testing Circuit



Technical Specification



MODEL No.	RATIO	OUTPUT PRESSURE AT 5Kg/cm ²	A	B	C	D	E	F	G	H BSP	J BSP	K BSP	Ø L	M	NRV MODEL
-----------	-------	--	---	---	---	---	---	---	---	-------	-------	-------	-----	---	-----------

A80-10	64	320	283	311	430	63	95	81.50	165	1/2"	1/2"	1/4"	12	201	HP2
A80-14	32	160	283	311	530	63	95	81.50	165	1/2"	1/2"	1/4"	12	201	LP3
A80-16	25	125	283	311	530	63	95	81.50	165	1/2"	1/2"	1/4"	12	201	LP3
A80-20	16	80	283	311	530	63	95	81.50	165	1/2"	1/2"	1/4"	12	201	LP3
A80-28	8	40	283	311	530	63	95	81.50	165	1/2"	1/2"	1/4"	12	201	LP3
A80-32	6.25	31	283	311	530	63	95	81.50	165	1/2"	1/2"	1/4"	12	201	LP3

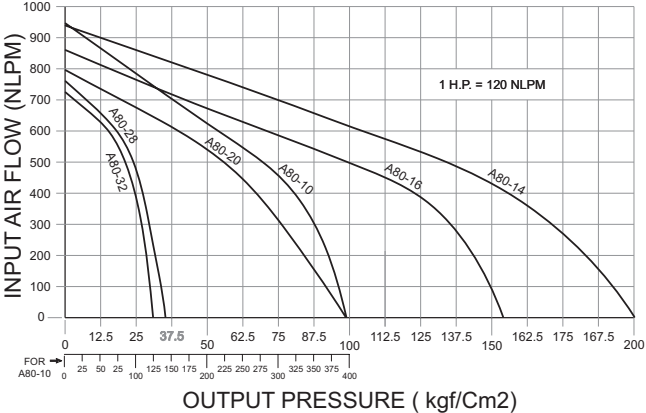
A100-10	100	500	283	311	430	75	114	81.50	165	1/2"	1/2"	1/4"	14	201	HP2
A100-14	51	255	283	311	530	75	114	81.50	165	1/2"	1/2"	1/4"	14	201	LP3
A100-16	39	195	283	311	530	75	114	81.50	165	1/2"	1/2"	1/4"	14	201	LP3
A100-20	25	125	283	311	530	75	114	81.50	165	1/2"	1/2"	1/4"	14	201	LP3
A100-28	12.75	64	283	311	530	75	114	81.50	165	1/2"	1/2"	1/4"	14	201	LP3
A100-32	9.75	49	283	311	530	75	114	81.50	165	1/2"	1/2"	1/4"	14	201	LP3
A100-40	6.25	31	301	329	548	75	114	81.50	165	3/4"	3/4"	1/4"	14	201	HF2
A100-56	3	15	301	329	548	75	114	81.50	165	3/4"	3/4"	1/4"	14	201	HF2

A160-16	100	500	335	385	482	115	180	169	216	3/4"	1/2"	1/2"	18	259	HP2
A160-20	64	320	335	385	482	115	180	169	216	3/4"	1/2"	1/2"	18	259	HP2
A160-28	32	160	335	385	572	115	180	169	216	3/4"	1/2"	1/2"	18	259	LP3
A160-32	25	125	335	385	572	115	180	169	216	3/4"	1/2"	1/2"	18	259	LP3
A160-40	16	80	335	385	482	115	180	169	216	3/4"	3/4"	1/2"	18	259	HF2
A160-56	8	40	335	385	482	115	180	169	216	3/4"	3/4"	1/2"	18	259	HF2
A160-80	10	50	353	403	482	115	180	169	220	3/4"	3/4"	1/2"	18	259	HF2

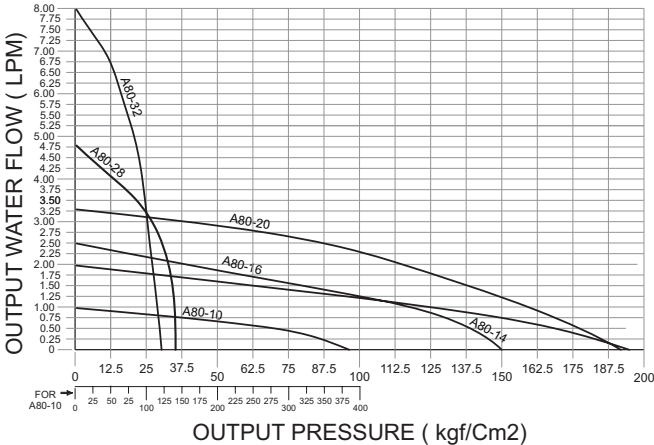
AIR & WATER FLOW GRAPHS

A80 PUMPS

INPUT AIR CONSUMPTION GRAPH

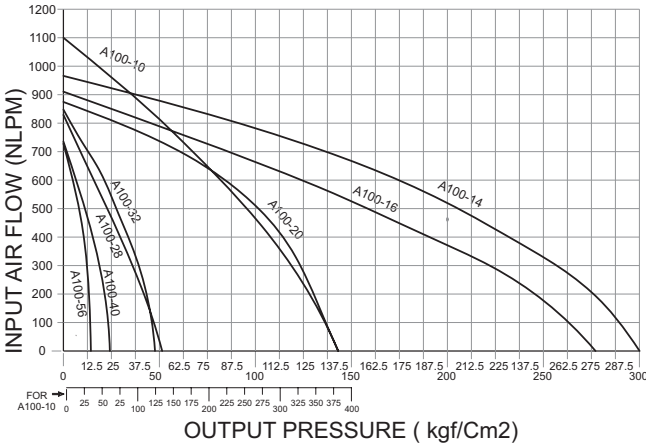


PRESSURE FLOW GRAPH

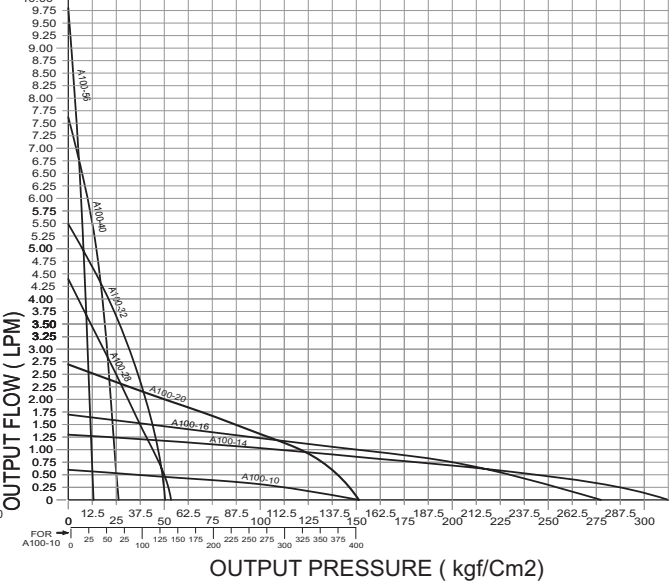


A100 PUMPS

INPUT AIR CONSUMPTION GRAPH

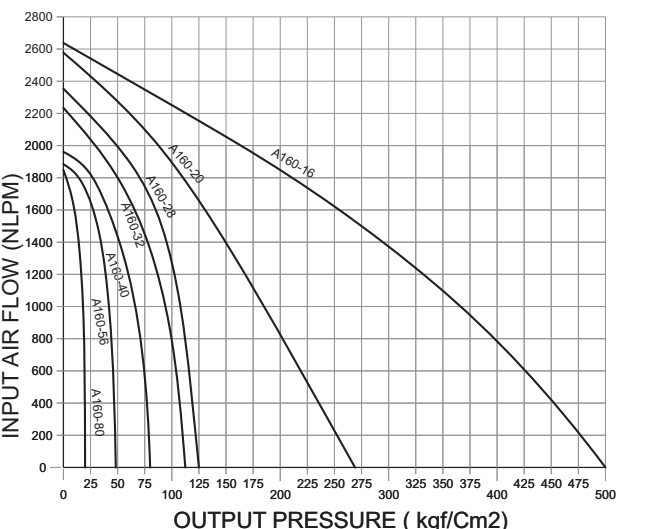


PRESSURE FLOW GRAPH



A160 PUMPS

INPUT AIR CONSUMPTION GRAPH



PRESSURE FLOW GRAPH

