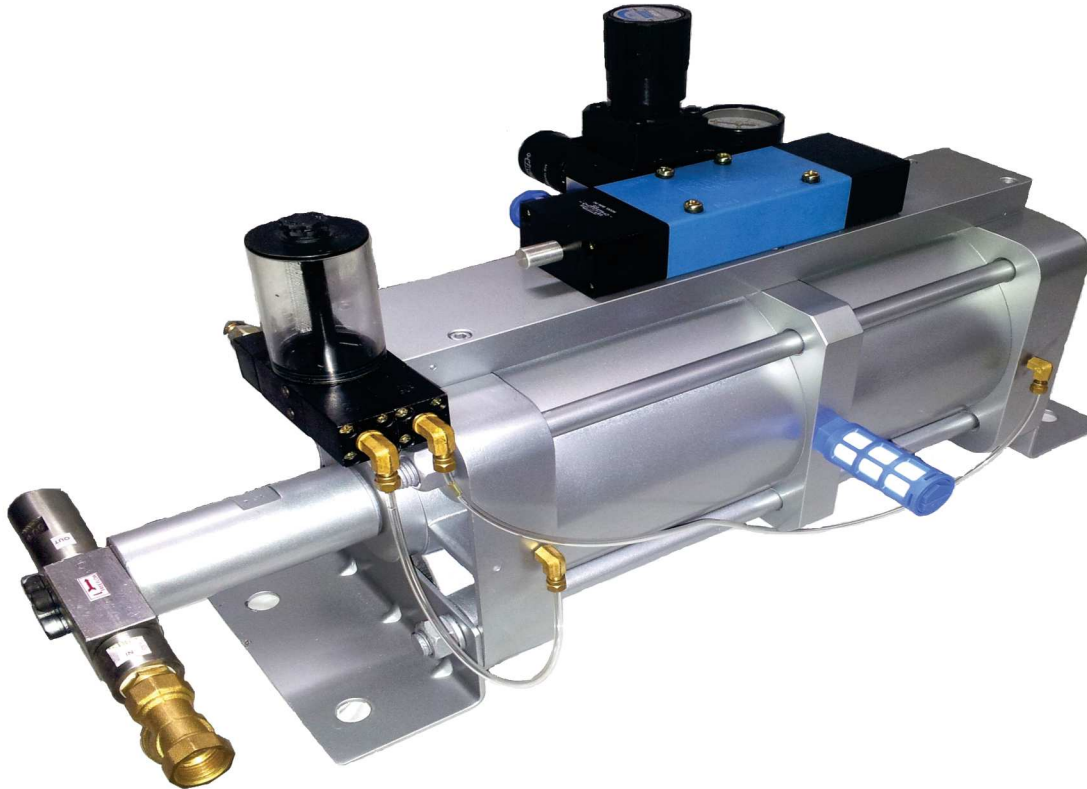




# Hydro Pneumatic Pumps

## ('N' SERIES HIGH PRESSURE)

The efficient, economical alternative to centrifugal, vane, piston & plunger pumps and hand operated pumps



### Typical Applications :

- Hydro static Pressure Testing
- Cyclic Pressure Testing
- Burst Strength Testing
- Operation of Hydraulic Jacks, Clamps & Presses
- Portable Systems for Construction, Mining & Defence Equipments
- Overload Protection of Mechanical Presses, Shears etc.

## Mercury Pneumatics Pvt. Ltd.

C-105, Ansa Industrial Estate, Saki Vihar Rd, Andheri (E), Mumbai - 400072. India.  
Ph.: +91-22-40344200

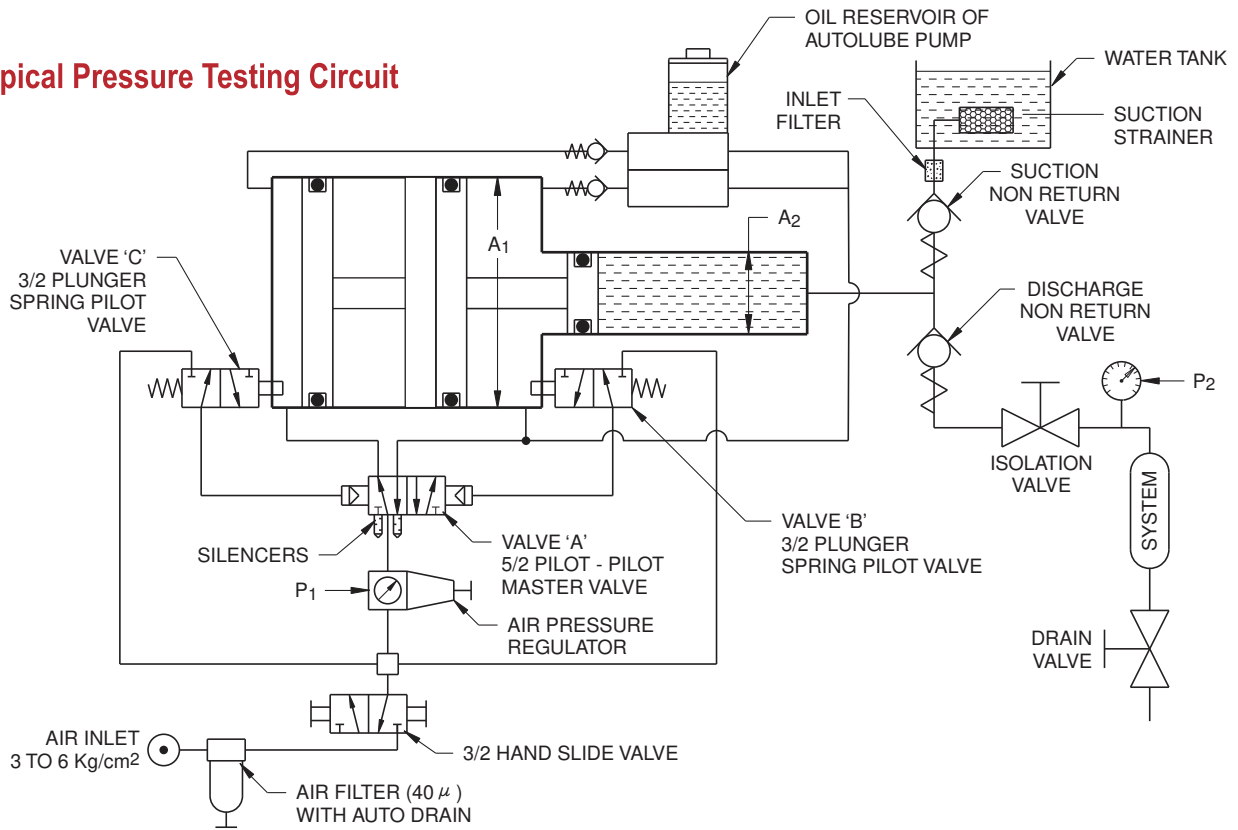
E-mail: [mercurypneumatics@vsnl.net](mailto:mercurypneumatics@vsnl.net) Website: [www.mercuryindia.net](http://www.mercuryindia.net)

**MERCURY** Hydro Pneumatic Pumps are products of extensive development efforts. These rugged pumps are efficient, low cost alternatives to motorised and hand operated pumps.

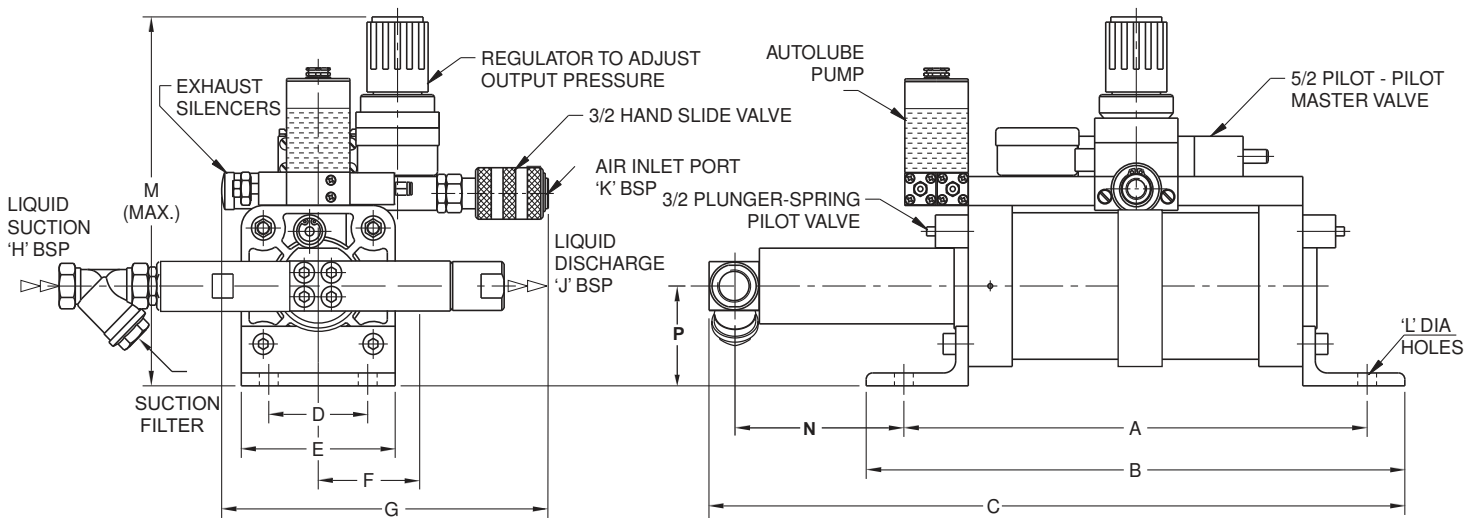
**Salient Features :**

- Compact and lightweight. Can be mounted in any orientation.
- Low air consumption when used in conjunction with a high volume, low pressure prefill pump.
- Automatically compensates for leakages to maintain constant pressure.
- Ideally suited for operation in explosive environments.
- Large variety of models to cover varied applications.
- Simple construction for easy servicing.

**Typical Pressure Testing Circuit**



**Technical Specification**



MODEL No.	RATIO	OUTPUT PRESSURE AT 5Kg/cm <sup>2</sup>	A	B	C	D	E	F	G	H BSP	J BSP	K BSP	Ø L	M	N	P	FREE DISCHARGE LITRES / MIN.	FREE AIR CONSUMPTION LITRES / MIN.
160-14-2	260	1300	558	639	690	115	185	76	280	1/2"	1/2"	1/2"	18	365	92	115	0.80	1201
160-20-2	128	640	558	639	690	115	185	76	280	1/2"	1/2"	1/2"	18	365	92	115	1.60	1196