



Automatic Drain Valve

For removal of condensed water from compresses air system

MERCURY



Model : ADV
For Small Compressors
& Air Line Filters

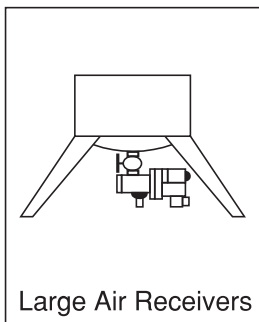


Model : ADVH
For Large Receivers,
Air Dryers, Moisture
Separators & After Coolers

Typical Applications

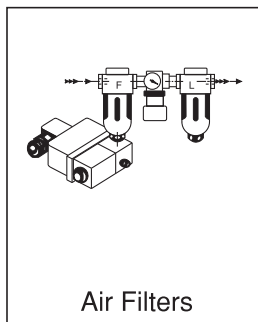
- Epoxy Moulded Water Tight, Solenoid Coil & Timer Assembly
- Manual Override as Standard Features
- Designed to Perform in Harsh Industrial Conditions

Applications Examples



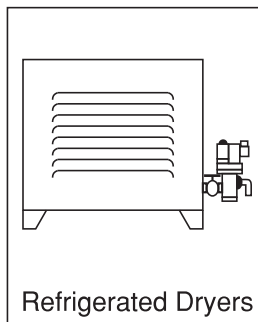
Large Air Receivers

Model : ADVH



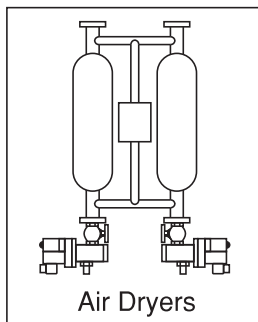
Air Filters

Model : ADV



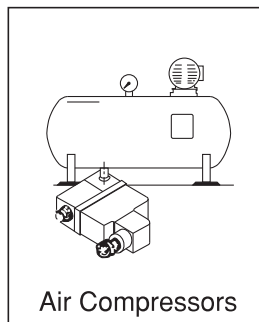
Refrigerated Dryers

Model : ADVH



Air Dryers

Model : ADVH



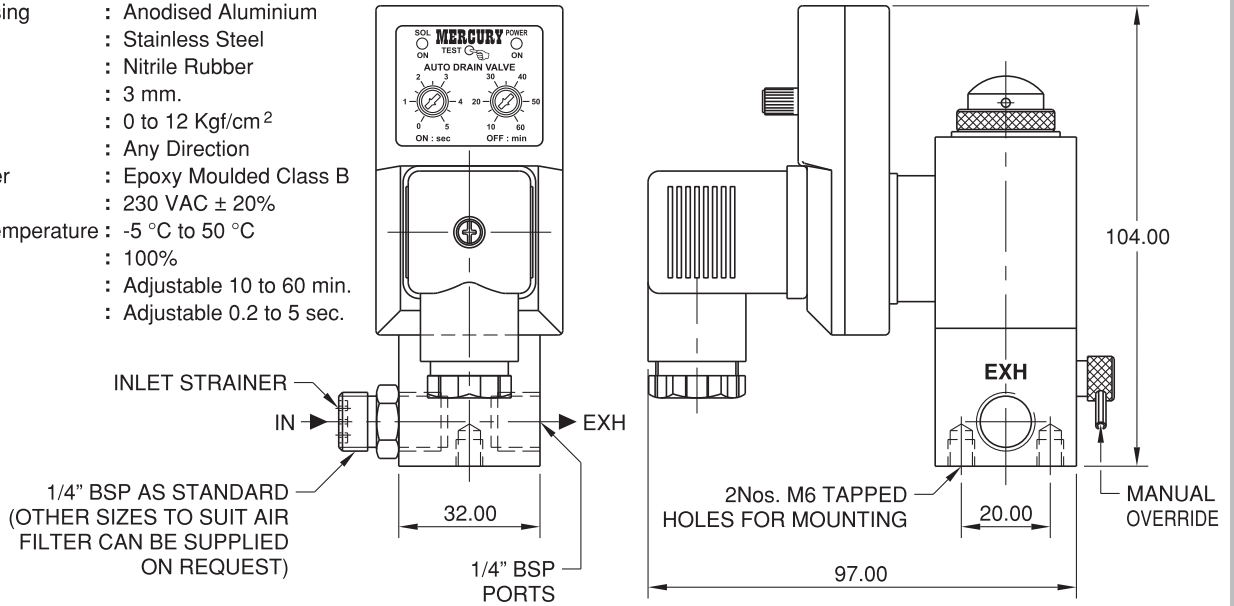
Air Compressors

Model : ADV

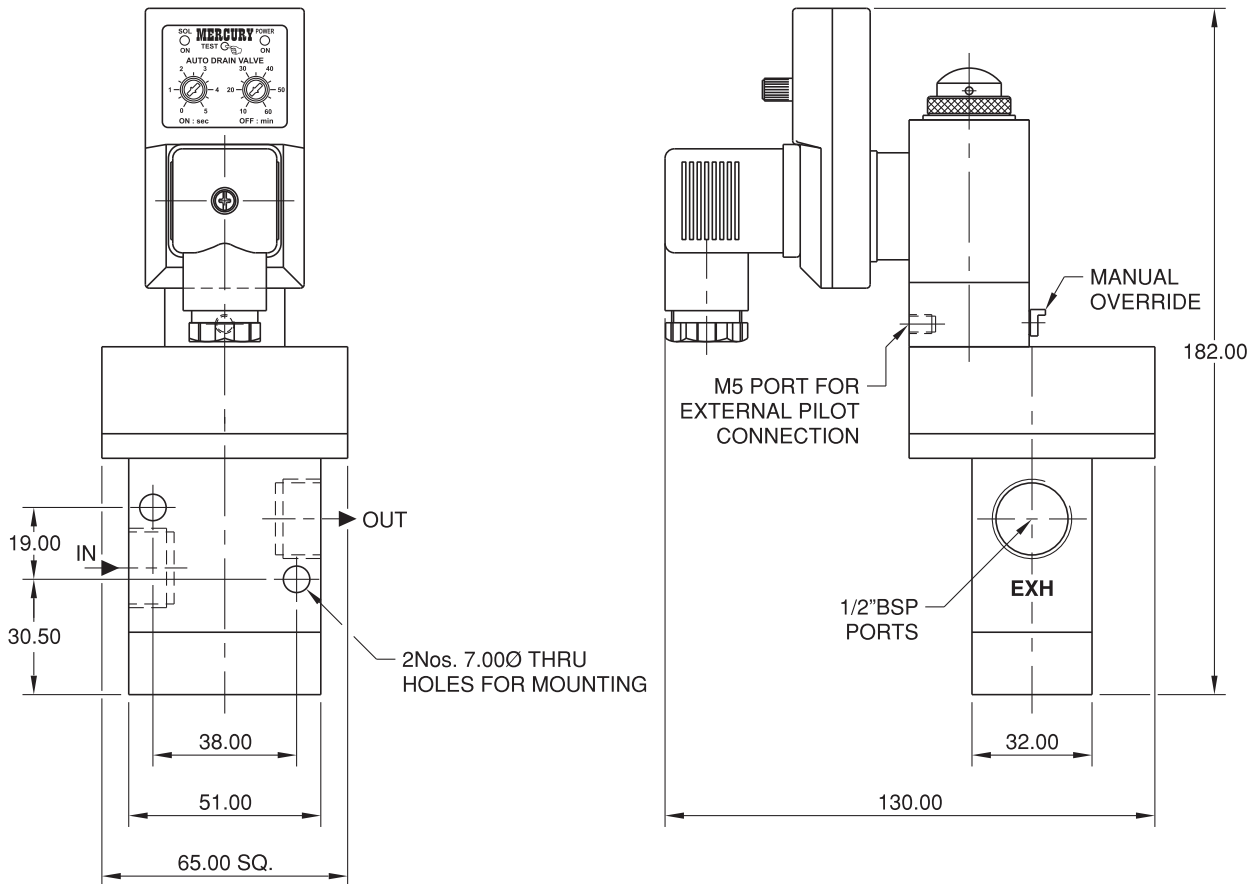
1/4" AUTOMATIC DRAIN VALVE MODEL : ADV

TECHNICAL SPECIFICATIONS

Valve Housing	: Anodised Aluminium
Inner Parts	: Stainless Steel
Seals	: Nitrile Rubber
Orifice	: 3 mm.
Pressure	: 0 to 12 Kgf/cm ²
Mounting	: Any Direction
Coil & Timer	: Epoxy Moulded Class B
Voltage	: 230 VAC ± 20%
Ambient Temperature	: -5 °C to 50 °C
Duty	: 100%
Off Time	: Adjustable 10 to 60 min.
On Time	: Adjustable 0.2 to 5 sec.



1/2" AUTOMATIC DRAIN VALVE MODEL : ADVH



TECHNICAL SPECIFICATIONS

Valve Housing	: Anodised Aluminium	Coil & Timer	: Epoxy Moulded Class B
Inner Parts	: Stainless Steel / Aluminium	Voltage	: 230 VAC ± 20%
Seals	: Nitrile Rubber	Ambient Temperature	: -5 °C to 50 °C
Orifice	: 13 mm.	Duty	: 100%
Pressure	: Main Line 2 to 20 Bars	Off Time	: Adjustable 10 to 60 min.
	: Pilot Line 3 to 8 Bars	On Time	: Adjustable 0.2 to 5 sec.
Mounting	: Any Direction		