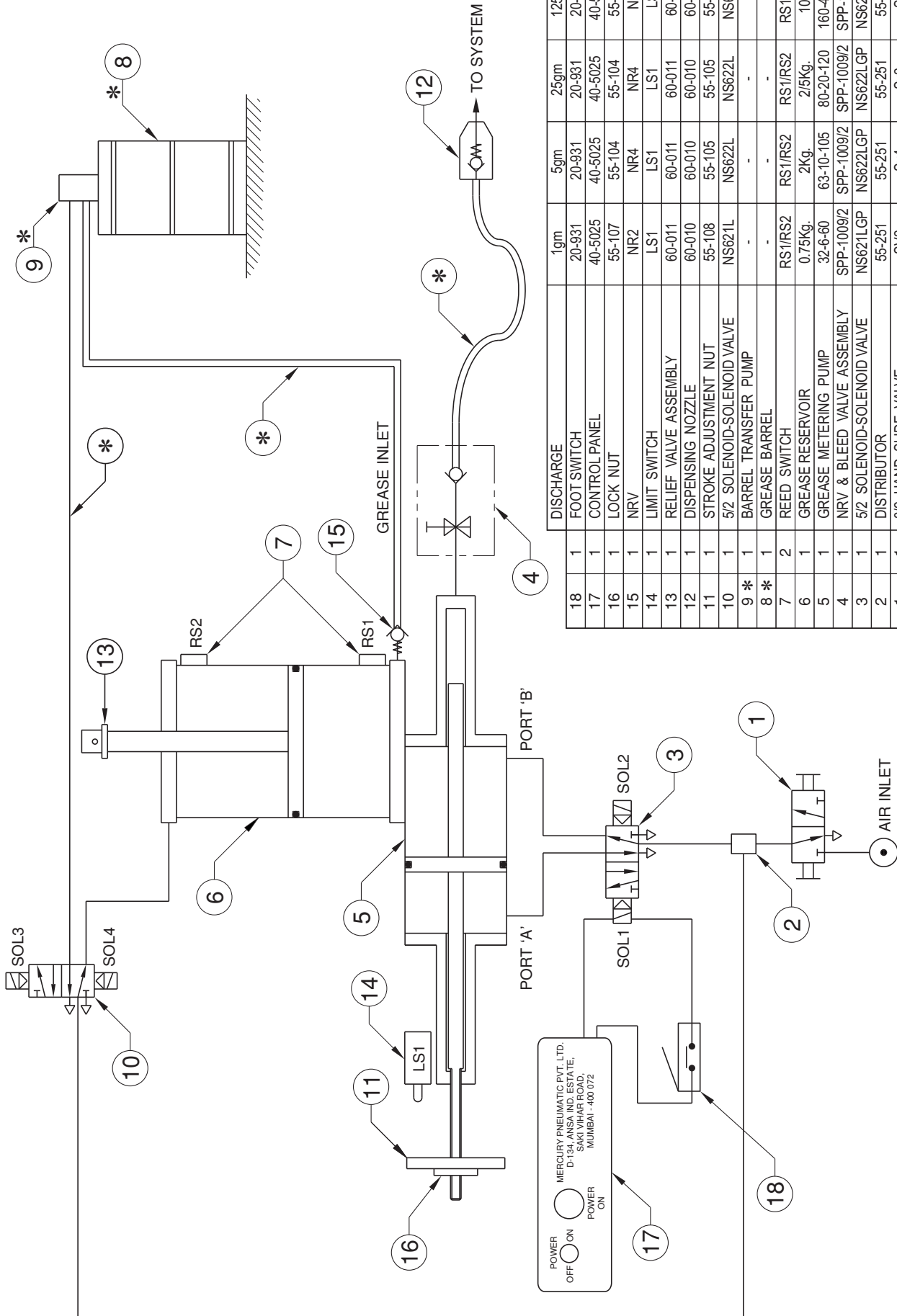


Pneumatic Circuit Diagram



ITEM	QTY.	DESCRIPTION	PART No.
18	1	DISCHARGE	125gm
17	1	FOOT SWITCH	25gm
16	1	CONTROL PANEL	5gm
15	1	LOCK NUT	20-931
14	1	NRV	20-931
13	1	NRV	40-5025
12	1	NRV	40-5025
11	1	NRV	55-104
10	1	NRV	55-104
9	1	NRV	55-104
8	1	NRV	55-104
7	2	NRV	55-104
6	1	NRV	55-104
5	1	NRV	55-104
4	1	NRV	55-104
3	1	NRV	55-104
2	1	NRV	55-104
1	1	NRV	55-104

NOTE :- * MARKED ITEMS ARE NOT SUPPLIED BY US

7.0 General Description

7.1 The grease pump is used for dispensing preset quantity of grease into various machine components such as bearings, shaft assemblies, gear assemblies etc.

7.2 Advantages of “MERCURY” Pneumatic Grease Pump

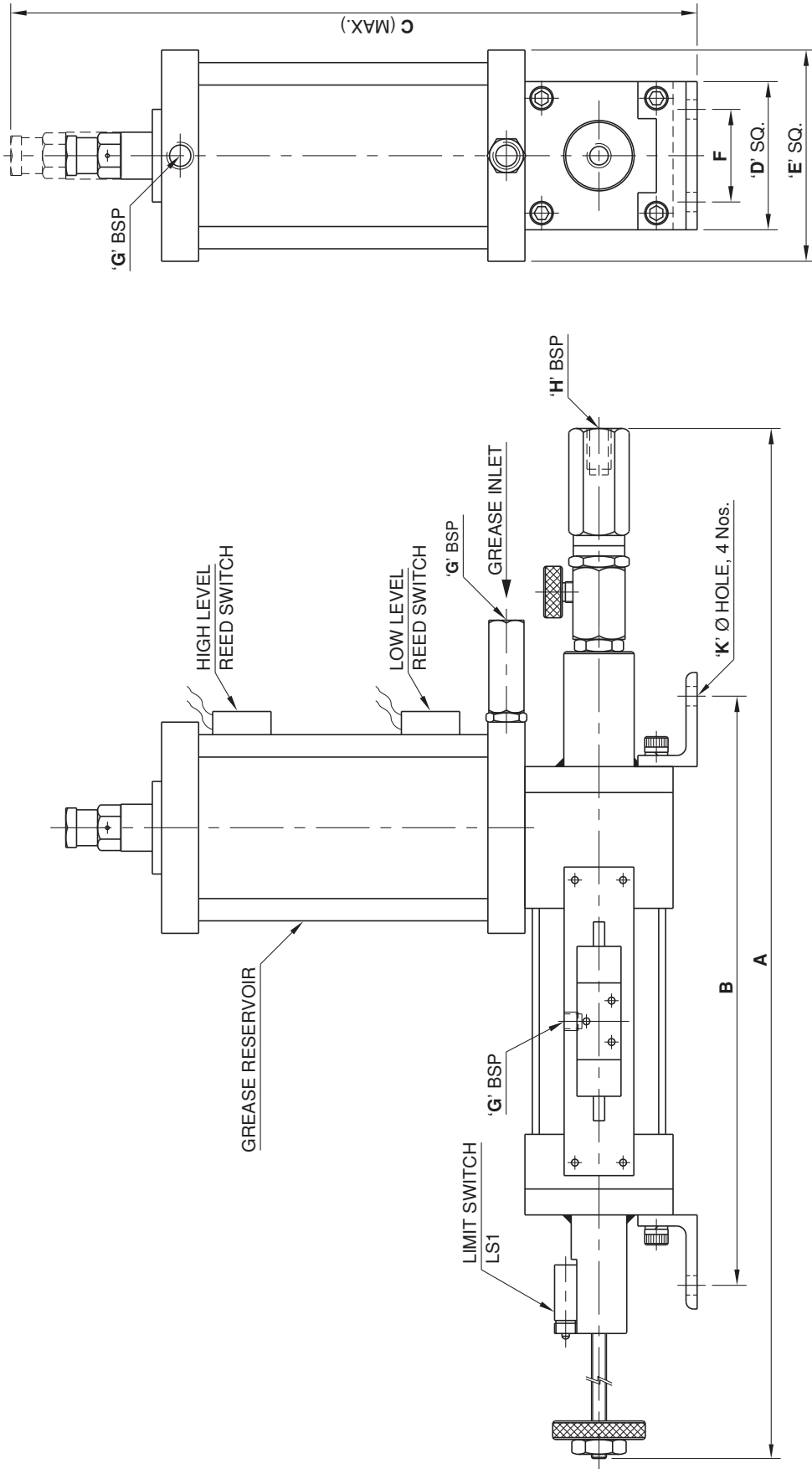
The New “**MERCURY**” Pneumatic Grease Pumps are an efficient, low cost alternative to motorized grease pumps and hand operated pumps. The salient features are

- (a) Compact and lightweight.
- (b) Low air consumption.
- (c) The volume of grease to be dispensed is adjustable.
- (d) Fitted with a grease reservoir with low/high level sensors.
- (e) Can be operated electrically or pneumatically.
- (f) Simple design for easy maintenance.

7.3 Sequence of operation

- (i) Press Foot Switch (Item 18) momentarily. Sol1 is switched ‘ON’, causing air to flow into port ‘A’ and exhaust from port ‘B’.
- (ii) The pump discharges grease at high pressure through nozzle (Item 12). The quantity of dispensed grease can be varied by adjusting knob (Item 11).
- (iii) At the end of the dispensing stroke, limit switch LS1 is actuated, causing Sol2 to come ‘ON’. The dispenser returns back to original position.
- (iv) The Grease Reservoir can be fitted automatically from a 200Kg drum through a barrel transfer pump (Item 9, not supplied by us) connected to grease inlet port on the barrel. The low and high level of grease in the barrel is sensed by reed switches RS1 & RS2 (Item 7) which switch solenoid valve (Item 10) feeding air to the barrel transfer ‘ON’ & ‘OFF’.

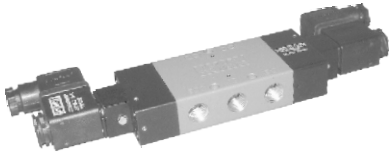
Technical Specification



MODEL No.	CAPACITY	RATIO	RESERVOIR	A	B	C	D	E	F	G	H	KØ	AIR CONSUMPTION Litres/Cycle
SPP 1021 (160-40-155)	125 gms	16	10 Kg	920	483	1215	185	225	115	1/2"	1/4"	18	30.0
SPP 1022 (80-20-120)	25 gms	16	2 Kg	755	385	900	98	118	63	1/4"	1/4"	12	6.0
	5Kg		755	385	972	101	185	63	1/4"	1/4"	1/4"	12	6.0
SPP 1024 (32-6-60)	1 gm	28	0.75 Kg	496	257	525	49	76	32	1/4"	1/4"	7	0.6
SPP 1025 (63-10-105)	5 gms	39	2 Kg	695	358	878	76	118	50	1/4"	1/4"	9	3.3

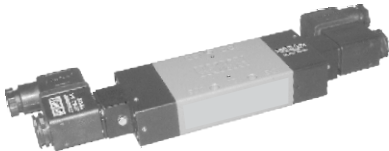


5/2 SOLENOID-SOLENOID VALVE FOR OPERATING BARREL PUMP



PART No.	DESCRIPTION	SEAL KIT No.
NS622L	1/4" 5/2 SOLENOID-SOLENOID VALVE 230VAC WITH LIGHTED CONNECTOR	SKNS622L

5/2 SOLENOID-SOLENOID MASTER VALVE



PART No.	DESCRIPTION	SEAL KIT No.
NS621LGP	1/8" 5/2 SOLENOID-SOLENOID VALVE FOR GREASE PUMP	SKNS621LGP
NS622LGP	1/4" 5/2 SOLENOID-SOLENOID VALVE FOR GREASE PUMP	SKNS622LGP
NS624LGP	1/2" 5/2 SOLENOID-SOLENOID VALVE FOR GREASE PUMP	SKNS624LGP

PRESSURE RELIEF VALVE



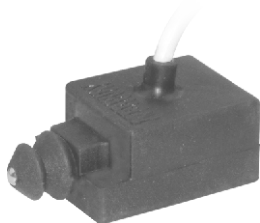
PART No.	DESCRIPTION
60-011	RELIEF VALVE

REED SENSOR



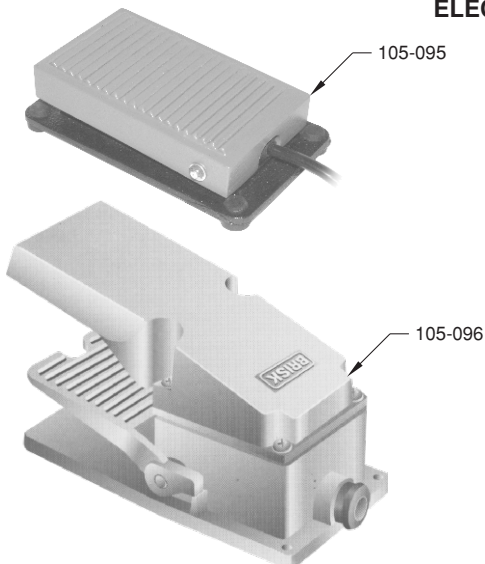
PART No.	DESCRIPTION
71-030	REED SWITCH

LIMIT SWITCH



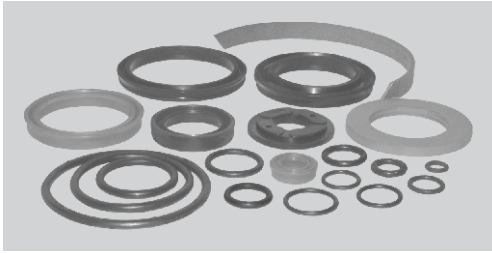
PART No.	DESCRIPTION
105-092	LIMIT SWITCH

ELECTRICAL FOOT SWITCH



PART No.	DESCRIPTION
105-095	ELECTRICAL FOOT SWITCH
105-096	ELECTRICAL FOOT SWITCH WITH GUARD

SEAL KITS



PART No.	DESCRIPTION
59-043	SEAL KIT FOR GREASE PUMP MODEL No. SPP1025
59-044	SEAL KIT FOR GREASE PUMP MODEL No. SPP1022
59-045	SEAL KIT FOR GREASE PUMP MODEL No. SPP1024
59-046	SEAL KIT FOR GREASE PUMP MODEL No. SPP1021

CONTROL PANEL



PART No.	DESCRIPTION
40-5025	CONTROL PANEL

HAND SLIDE VALVE



PART No.	DESCRIPTION	SEAL KIT No.
SV2	1/4" HAND SLIDE VALVE	SKSV2
SV4	1/2" HAND SLIDE VALVE	SKSV4

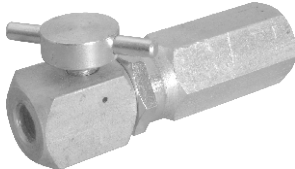
DISPENSING NOZZLE



PART No.	DESCRIPTION
60-010	DISPENSING NOZZLE

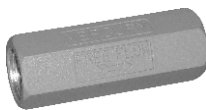
* NOTE :- SPECIAL SHAPE NOZZLES CAN BE SUPPLIED ON REQUEST

AIR BLEED VALVE & NON RETURN VALVE ASSEMBLY



PART No.	DESCRIPTION
60-012	BLEED VALVE WITH NRV

GREASE INLET NON RETURN VALVE



PART No.	DESCRIPTION	SEAL KIT No.
NR2	1/4" NON-RETURN VALVE	SKNR2
NR4	1/2" NON-RETURN VALVE	SKNR4