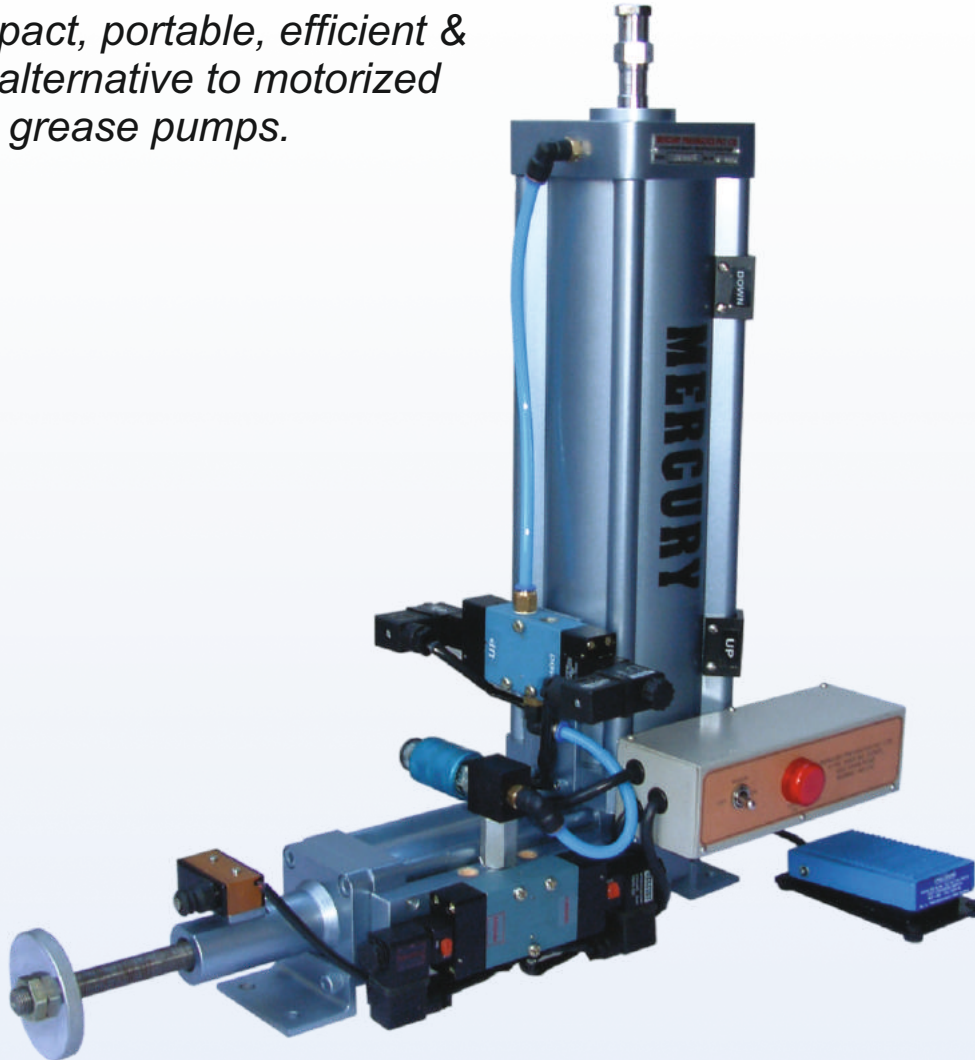
**MERCURY**

Leadership through innovation

Pneumatic Grease Dispensing Pumps

The compact, portable, efficient & low cost alternative to motorized metering grease pumps.



Salient Features

- Compact and lightweight
- Low air consumption
- Adjustable grease dispensing volume
- Low & high level sensing for reservoir
- Electrically or pneumatically operated
- Easy maintenance

Mercury Pneumatics Pvt. Ltd.

C-105, Ansa Industrial Estate, Saki Vihar Rd, Andheri (E),
Mumbai - 400072. India. Phone: +91-22-40151020

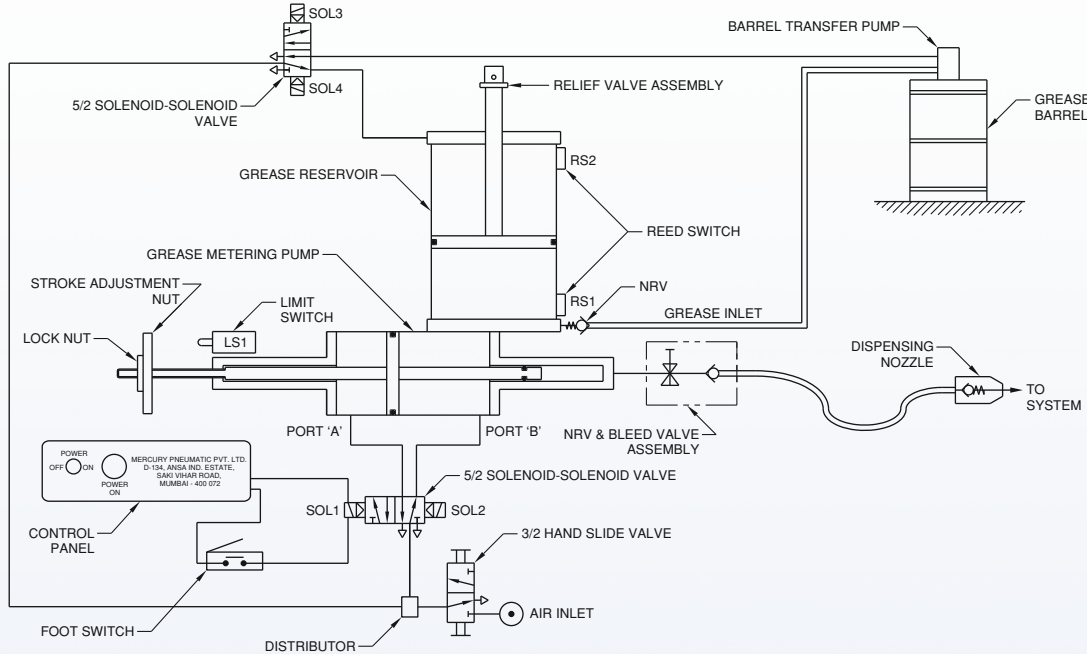
E-mail: contactus@mercuryindia.net Website: www.mercuryindia.net

General Description

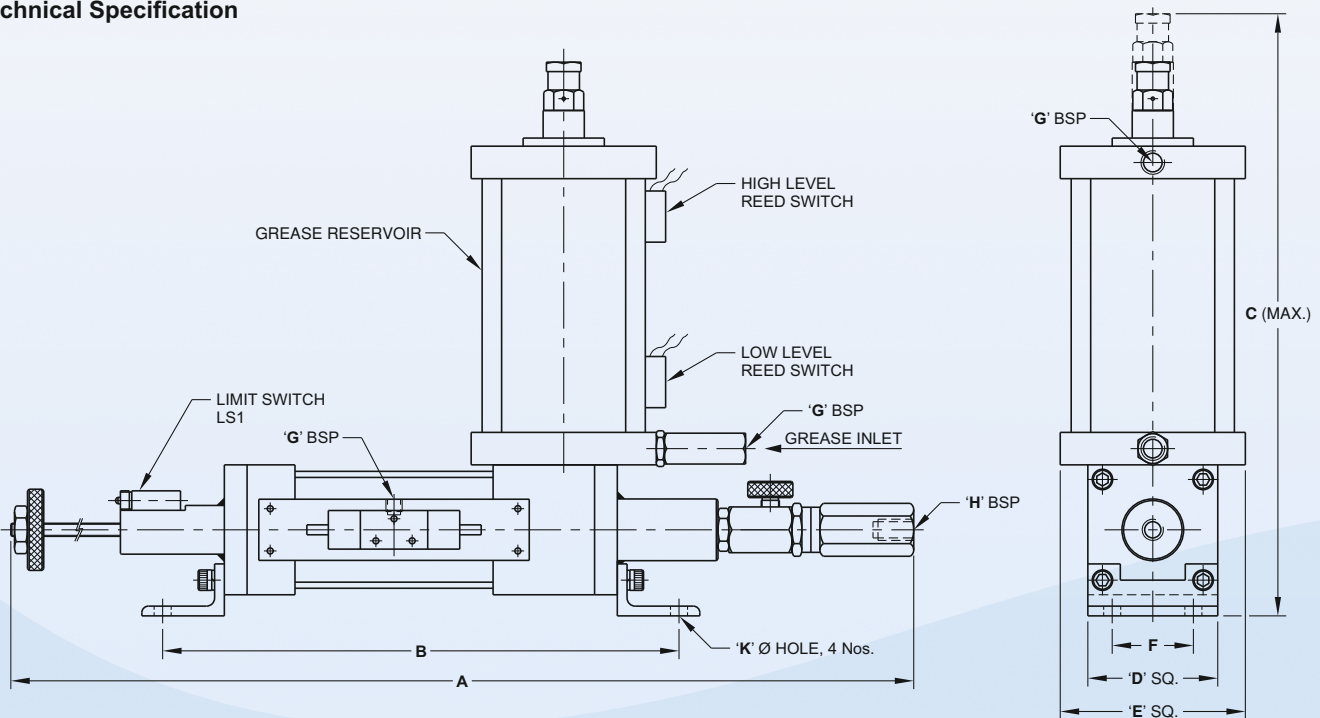
The grease pump is used for dispensing preset quantity of grease into various machine components such as bearings, shaft assemblies, gear assemblies etc.

Sequence of operation

- (i) Press Foot Switch momentarily. Sol1 is switched 'ON', causing air to flow into port 'A' and exhaust from port 'B'.
- (ii) The pump discharges grease at high pressure through nozzle. The quantity of dispensed grease can be varied by adjusting knob.
- (iii) At the end of the dispensing stroke, limit switch LS1 is actuated, causing Sol2 to come 'ON'. The dispenser returns back to original position.
- (iv) The Grease Reservoir can be fitted automatically from a 200kg drum through a barrel transfer pump connected to grease inlet port on the barrel. The low and high level of grease in the barrel is sensed by reed switches RS1 & RS2 which switch solenoid valve feeding air to the barrel transfer 'ON' & 'OFF'.



Technical Specification



MODEL No.	CAPACITY	RATIO	RESERVOIR	A	B	C	D SQ.	E SQ.	F	G BSP	H BSP	K Ø	AIR CONSUMPTION Litres/Cycle
SPP 1021 (160-40-155)	125 gms	16	10 Kg	920	483	1215	185	225	115	1/2"	1/4"	18	30.0
SPP 1022 (80-20-120)	25 gms	16	2 Kg	755	385	900	98	118	63	1/4"	1/4"	12	6.0
			5Kg	755	385	972	101	185	63	1/4"	1/4"	12	6.0
SPP 1024 (32-6-60)	1 gm	28	0.75 Kg	496	257	525	49	76	32	1/4"	1/4"	7	0.6
SPP 1025 (63-10-105)	5 gms	39	2 Kg	695	358	878	76	118	50	1/4"	1/4"	9	3.3