



# Pneumatic Silencers

(High Pressure Series)



| MODEL NO. | SL25H    | SL26H  | SL27H      | SL28H      |
|-----------|----------|--------|------------|------------|
| SIZE      | 3/4" BSP | 1" BSP | 1 1/4" BSP | 1 1/2" BSP |

## Salient Features

- Compact design for limited space
- Withstands shocks
- Pressure upto 40 Bar
- Available with relief valve for enhanced safety
- Heavy duty stainless steel mesh body
- Noise reduction upto  $\leq 80$  dB
- Filters out dust particles as small as 5 micron

**Mercury Pneumatics Pvt. Ltd.**

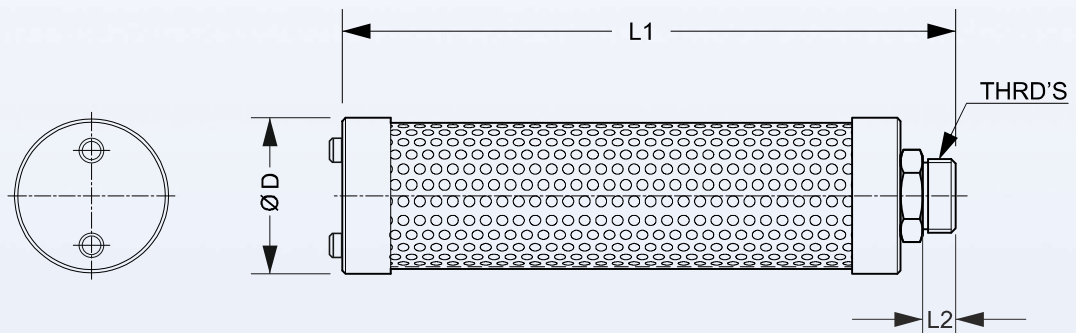
C-105, Ansa Industrial Estate, Saki Vihar Rd, Andheri (E),  
Mumbai - 400072, India. Phone: +91-22-40151020  
E-mail: [contactus@mercuryindia.net](mailto:contactus@mercuryindia.net) Website: [www.mercuryindia.net](http://www.mercuryindia.net)



## Technical Specification:

|                                   |             |
|-----------------------------------|-------------|
| <b>Media</b>                      | Air         |
| <b>Temperature Range</b>          | +5 to +50°C |
| <b>Maximum Operating Pressure</b> | 40 bar      |
| <b>Threaded Connection</b>        | Male Thread |
| <b>Noise Reduction</b>            | ≤ 80 dB     |

## Dimensional Layout:



| <b>Model No.</b> | <b>Thread</b> | <b>ØD</b> | <b>L1</b> | <b>L2</b> |
|------------------|---------------|-----------|-----------|-----------|
| SL25H            | 3/4"          | 85        | 225       | 20        |
| SL26H            | 1"            | 85        | 245       | 20        |
| SL27H            | 1 1/4"        | 100       | 265       | 20        |
| SL28H            | 1 1/2"        | 100       | 285       | 20        |